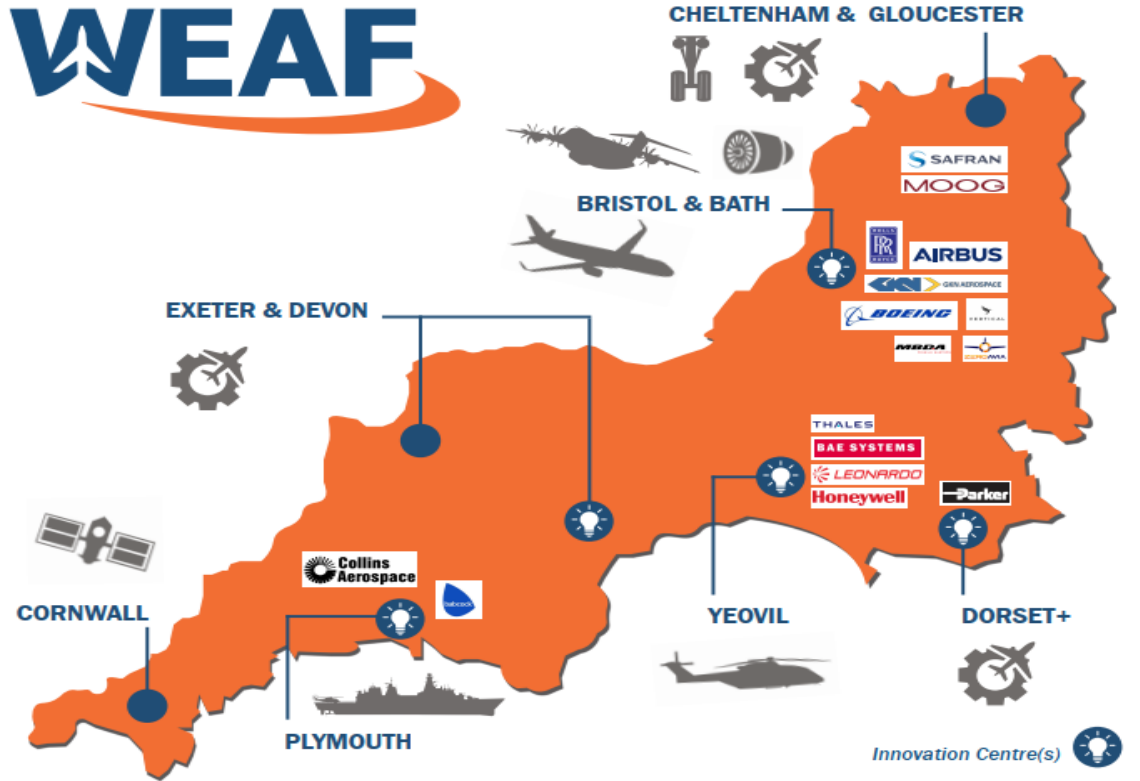


WEAF





“The South West UK’s World Beating Aerospace Technology Cluster”



South West Supply Chain at a Glance

- Actuation Systems
- Advanced Machining
- Advanced Wing Systems
- Aero Engines
- Aero Structures
- Aircraft Testing Services
- Aircrew Protection & Life Support
- Airframe Fuel Systems
- Avionics

- Composite Tape Lay-down
- Composites
- Design Services
- Drones
- Electrical Power Systems
- Environmental Control Systems
- EVTOL
- Flight Test Zones
- Flight Training

- Passenger Seating
- Precursorisation Systems
- Product Management
- Propellers
- Reconnaissance & Security Systems
- Rotary Wing Aircraft
- Rotors & Rotor Drives
- Sensor Systems
- Simulators, Training & Synthetic Environments



- Cabling
- Circuit Boards
- Coatings
- Composite Braiding/Weaving
- Composite Extrusion
- Composite Filament Winding
- Composite Manufacturing Services
- Composite Moulding
- Composite Structures

- Helicopters
- Hydraulic Systems
- Investment Castings
- Landing Gear
- Missiles
- MRO Services
- Nuclear Decommissioning
- Nuclear Engineering
- Oxygen Systems

- Submarines
- Surface Treatments
- Thermal Systems
- Thermoplastic Composite Pressing
- Through Life Maintenance Systems
- Washups
- Wing Spars
- Winglets
- Wings
- Wing Assemblies

WEAF



1- Gloucester/Cheltenham

Kemble

- Safran
- GE
- Ontic
- Moog
- GCHQ
- Zero Avia
- SME Cluster

2 Bristol /Bath

- Airbus
- RR
- GKN
- Boeing
- Thales
- Babcock
- B'Airport
- Vertical
- NCC
- CMFS
- IAAPC
- Bristol Uni
- Bath Uni
- UWE
- SME Cluster

3 Yeovil

- Leonardo Helicopters
- Honeywell
- BAE Systems
- iAero Technology Centre.
- RNAS Yeovilton
- Thales
- Boeing
- SME cluster

4 Exeter

- Exeter Airport
- Ampiere
- MB Aerospace
- Exeter Aerospace
- Met Office
- Exeter Uni

5 Plymouth

- Collin Aerospace
- Fine Tubes
- Babcock
- Thales
- Plymouth Uni

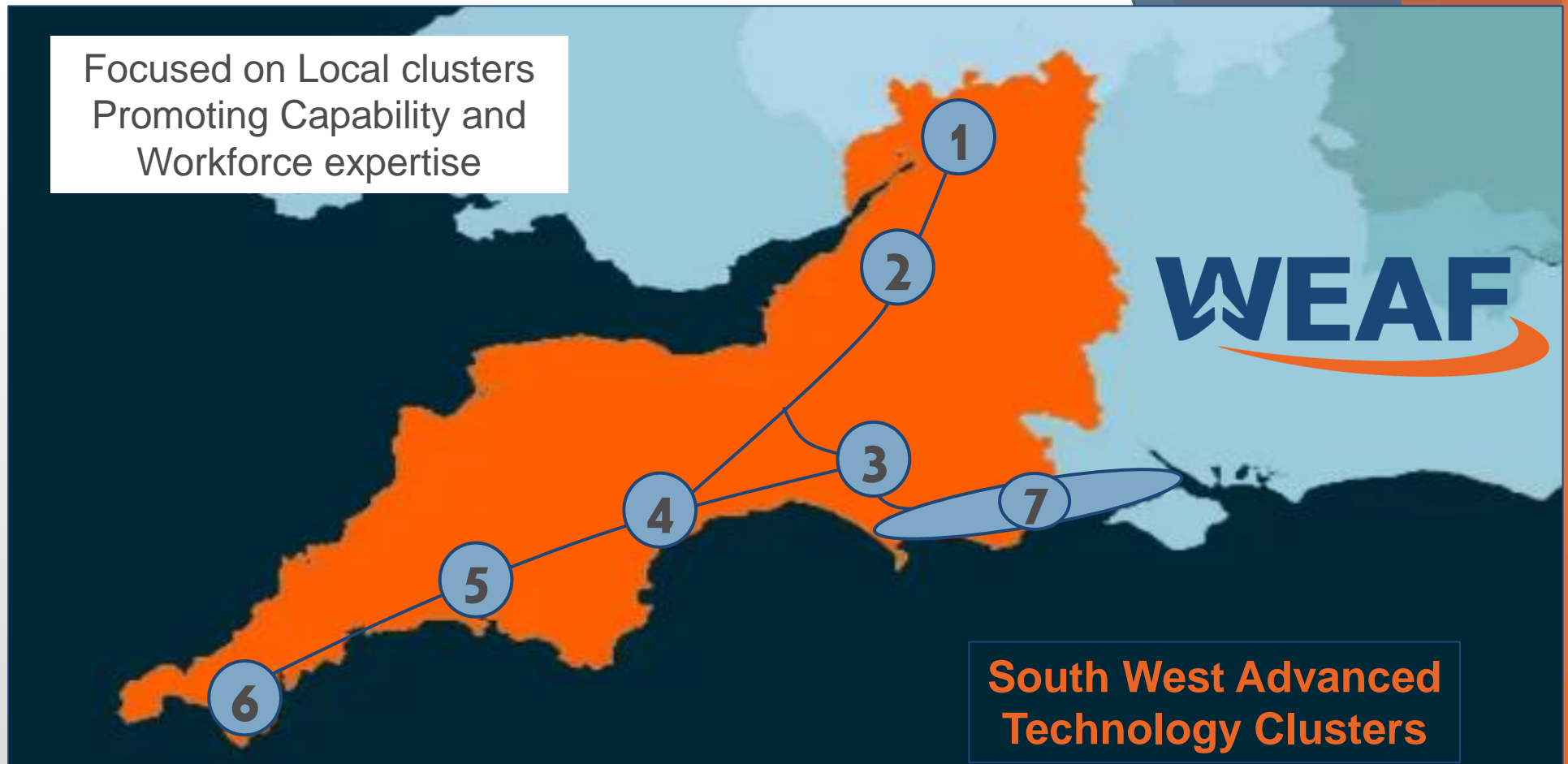
6 Cornwall

- Spaceport
- Virgin Orbit
- Goonhilly Space
- Falmouth Uni
- Newquay Airport

7 Dorset Corridor

- GKN
- Aernnova
- Parker Meggitt
- Eaton
- SME Cluster
- B'mouth/ S'Hampton Airports

Focused on Local clusters
Promoting Capability and
Workforce expertise



Major centre for Aerospace & Advanced Engineering technologies

AEROSPACE AND ADVANCED ENGINEERING IN THE UK SOUTH WEST

UK'S MOST CAPABLE AEROSPACE CLUSTER

£70M INVESTMENT INTO AIRBUS AEROSPACE PARK WING INTEGRATION CENTRE

90% WORLDWIDE EXPORTS

MOD SUPPORTS **30,000 JOBS** IN THE SOUTH WEST AND IN 2016 SPENT **£4BN** IN LOCAL INDUSTRIES

GLOBAL LEADERS **TOP 14 PRIME COMPANIES** ARE LOCATED HERE

LOCATION FOR TOP INTERNATIONAL BUSINESSES

AIRBUS | BAE SYSTEMS | BOEING | GE AVIATION SYSTEMS | GKN AEROSPACE | HONEYWELL | LEONARDO | LOCKHEED MARTIN | RAYTHEON | RENISHAW | ROLLS ROYCE | SAFRAN | THALES |

SUPERB FACILITIES

- LEADING MRO CAPABILITIES AT DORSET AVIATION BUSINESS PARK
- MOD BOSCOMBE DOWN TESTING & TRAINING FACILITIES
- CENTRE FOR ALTERNATIVE MATERIALS AND RE-MANUFACTURING TECHNOLOGIES
- PORTON SCIENCE INCUBATION CENTRE
- BRISTOL & BATH SCIENCE PARK
- BRISTOL ROBOTICS LAB
- HOME TO GCHQ & THE NATIONAL CYBER SECURITY CENTRE
- GOONHILLY EARTH STATION
- ONE OF THE UK'S LONGEST RUNWAYS & UNCONGESTED AIRSPACE
- GLOBAL #1 UNIVERSITY INCUBATOR SETSQUARED

DIGITAL REVOLUTION SUPPORTED BY HIGHLY DEVELOPED TECH SECTOR:

- LARGEST & MOST PRODUCTIVE TECH CLUSTER OUTSIDE LONDON
- MOST PRODUCTIVE CORE CITY
- £320K TURNOVER PER WORKER

OVER 800 SUPPLY CHAIN COMPANIES
KEY COMPETENCIES

WING DESIGN, ENGINES, LANDING GEAR, COMPOSITES, AUTONOMOUS SYSTEMS, AVIONICS, FUEL SYSTEMS, ROTOR CRAFT, ROBOTICS, PROPELLORS, METROLOGY, DEFENCE & HIGH VALUE DESIGN

HOME TO THE NATIONAL COMPOSITES CENTRE

UNIVERSITY OF BRISTOL IS AIRBUS'S TOP UK ACADEMIC PUBLISHING PARTNER

UNIVERSITY OF BATH INNOVATIVE DESIGN & MANUFACTURING RESEARCH CENTRE

UNIVERSITY OF EXETER CENTRE FOR ADDITIVE LAYER MANUFACTURE

UNIVERSITY OF THE WEST OF ENGLAND HOME TO LARGEST ROBOTICS LAB IN EUROPE

98,000 JOBS VALUE OF **£7BN**

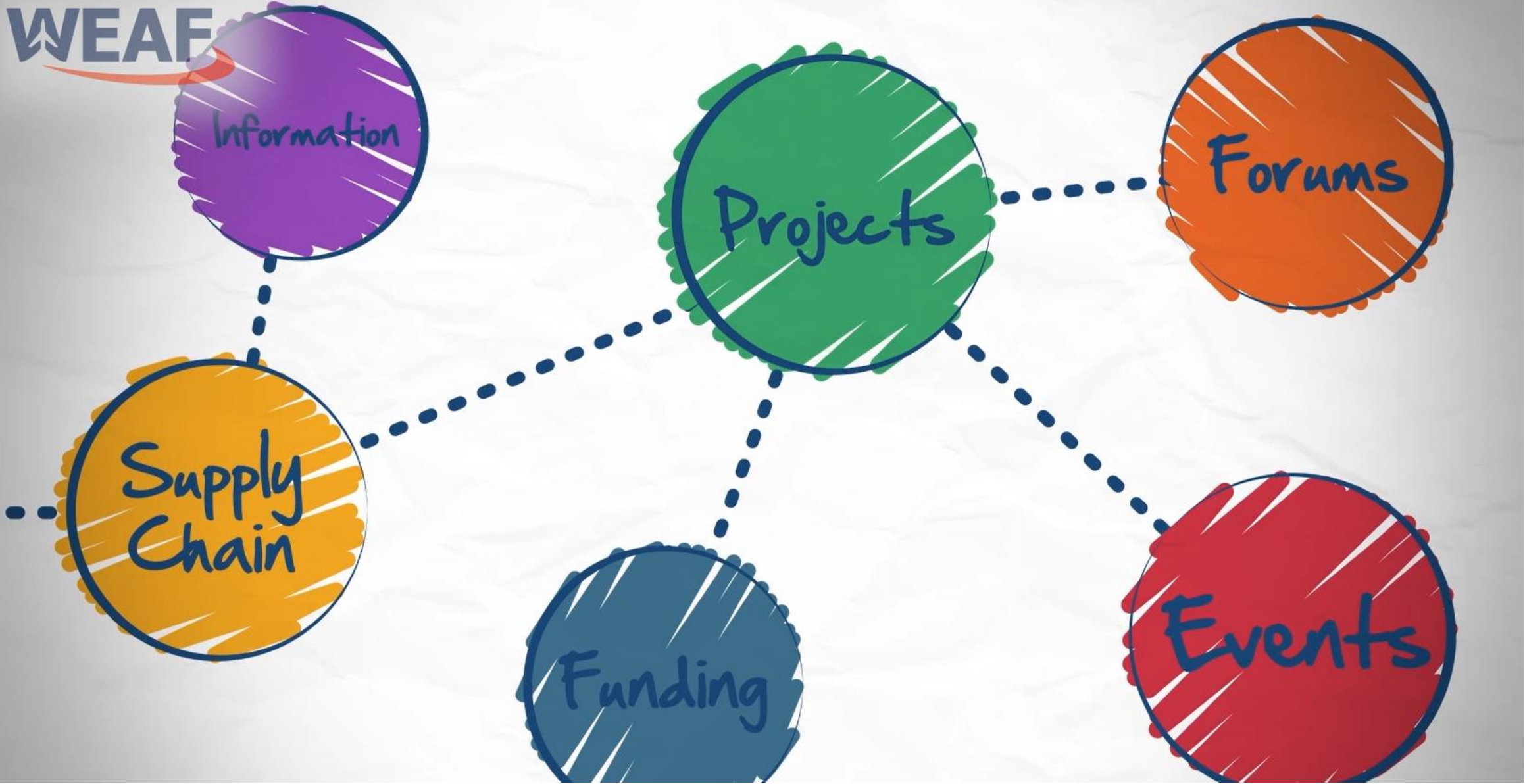


Four major Start up's have located into the Southwest region due to skills and capabilities.

WEAF



WEAF



Search

Supply chain

Innovation

Engineering



Emerging Zero Emission Clusters.

H2

- Production and transmission
- Aircraft Fuel cell systems
- Storage.
- Ground support
- Transport

Electrical Power

- Solid state Control
- Actuation
- Battery Storage use.
- Electrical motors.

- Marine Propulsion
- Auto and Land power systems
- Ground & Flight testing

Supporting Sustainable Development and Workforce expertise



South West Net Zero Clusters

- 1- Gloucester/Cheltenham
Kemble
- Zero Avia
 - Electroflight

- 2 Bristol /Bath
- | | |
|------------|---------------|
| • Airbus | • IAAPC |
| • RR | • Bristol Uni |
| • GKN | • Bath Uni |
| • SWHEP | • UWE |
| • Vertical | |
| • NCC | |
| • CMFS | |

- 3 Yeovil
- Leonardo Helicopters
 - Honeywell
 - iAero Technology Centre.

- 4 Exeter
- Exeter Airport
 - Exeter Aerospace
 - Met Office
 - Exeter Uni
 - Ampiere

- 5 Plymouth
- Thales
 - Plymouth Uni



Collaboration delivering regional advantage



Key Priorities

19



Continue to deliver on our **commercial aircraft ramp-up**



Successfully manage the **transformation of Airbus Defence and Space**



Leverage **digitalisation & lead the development of sustainable aerospace**

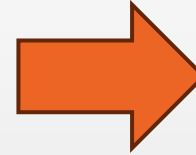


Maintain the **strong commercial positioning** across businesses



Focus on **profitable growth**

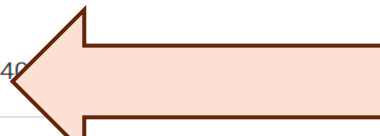
AIRBUS



STRATEGIC PROGRAMME

The ATI's flagship funding programme enabling technology research and development for the benefit of the UK aerospace sector delivering clean growth.

- Funding ratio of 60:40
- Two stage application process
- A 2.5% industrial contribution to the ATI applies to successful applications
- Applications must align with Destination Zero



SME PROGRAMME

A funding programme tailored to the needs of SMEs to strengthen and further encourage technology innovation within the supply chain and civil aviation.

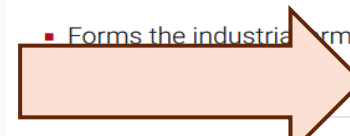
- At least 50% of the funding must be used for business development
- Grants up to £1.5m
- 12 to 36 months in duration
- Applications must align with Destination Zero



NON-CO2 PROGRAMME

A funding programme for the development of innovative technologies to reduce aircraft non-CO2 emissions and their climate impacts.

- Forms the industrial contribution of the wider Aviation
- A 2.5% industrial contribution to the ATI applies to successful applications
- Applications must align with the Non-CO2 Technologies Roadmap



Free Support



Delivering Innovation and Business support in Partnership with iAero



The logo for WEAF, featuring the letters 'WEAF' in a bold, blue, sans-serif font. A thin orange swoosh underline is positioned beneath the letters.The logo for the Somerset Innovation Network, consisting of the words 'SOMERSET', 'INNOVATION', and 'NETWORK' stacked vertically in a white, bold, sans-serif font. The text is set against an orange background with a white curved border on the top and right sides.

21 Sme's supported

4 start ups

Aero, Defence , Materials

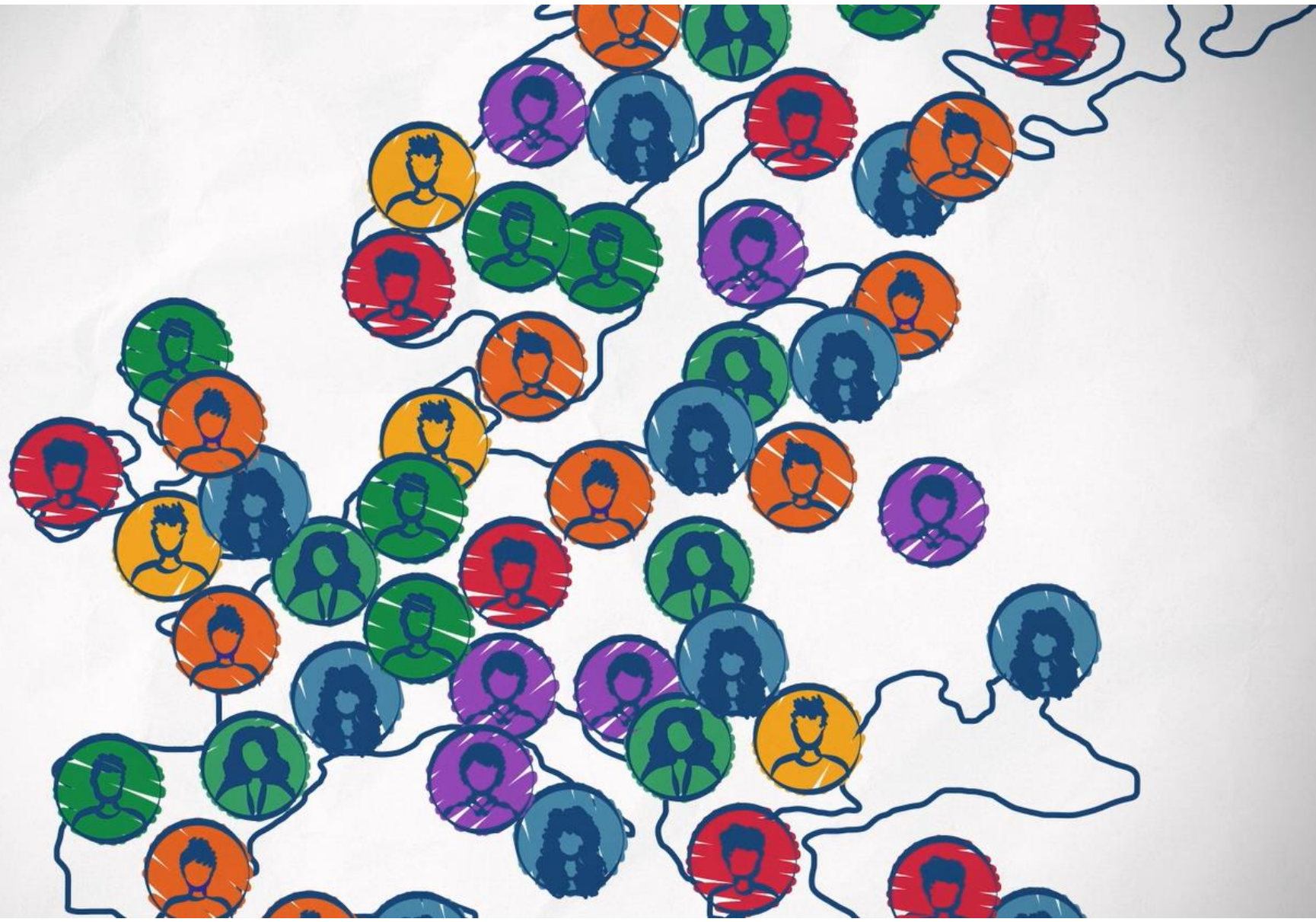
65% Somerset , 35 % Dorset

Marketing, Productivity, Technical

iAero based Workshop + Networking

Drop in sessions planned for 2025

WEAF



WEAF

The logo for WEAF features the letters 'WEAF' in a bold, dark blue, sans-serif font. Below the letters is a thick, orange, curved swoosh that starts under the 'W' and ends under the 'F', curving upwards at the right end.

**Looking forward to the
next 20 years.
Supporting its members and
the SW community.**